

FEATURES

- Innovative soundproofing systems designed to perform in the field
- High performance sound attenuation
- Odour and vapour barrier
- Light and easy to install
- Manufactured in Canada

SONOPAN II PROPERTIES

| | | |
|-------------------------|---------------------|--------------------|
| Panel size | 1.22 m x 2.44 m | 4 ft x 8 ft |
| Area covered / panel | 2.97 m ² | 32 ft ² |
| Thickness | 19.05 mm | 3/4 in |
| Weight / panel | 11.5 kg | 26 lb |
| Number of panels / skid | 65 | |

100% recycled wood fibre
0% VOC - Volatile organic compounds
CCMC# 12419-R

REFLEXOR PROPERTIES

| | | |
|------------------------|----------------------|---------------------|
| Roll size | 1.22 m x 15.24 m | 4 ft x 50 ft |
| Area covered / roll | 18.58 m ² | 200 ft ² |
| Thickness | 1.70 mm | 0.039 in |
| Weight / roll | 9.8 kg | 21.6 lb |
| Number of rolls / skid | 39 | |

100% recycled polyester fibre
0% VOC - Volatile organic compounds

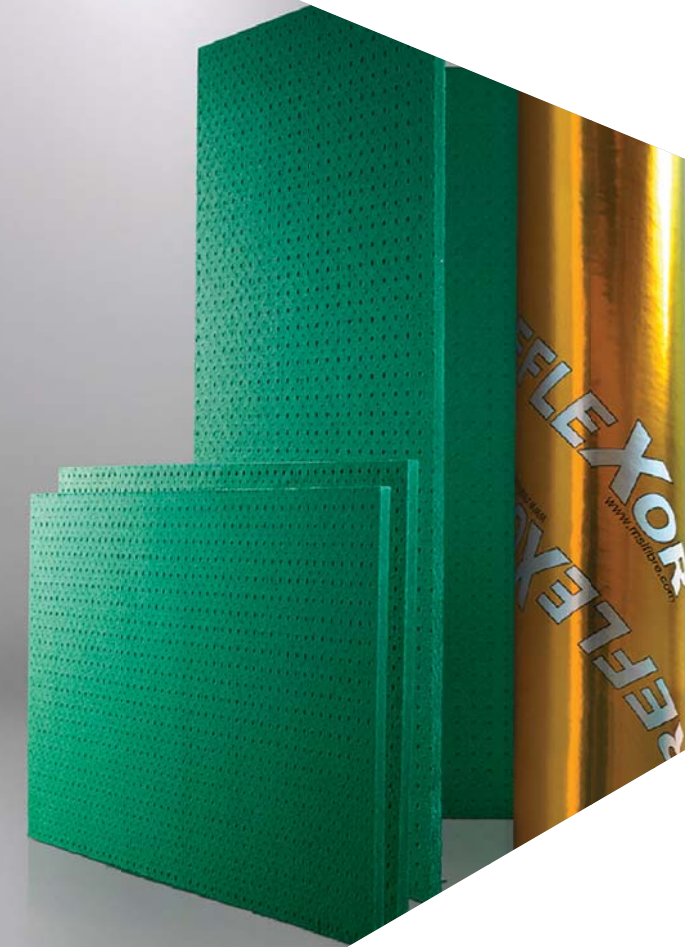
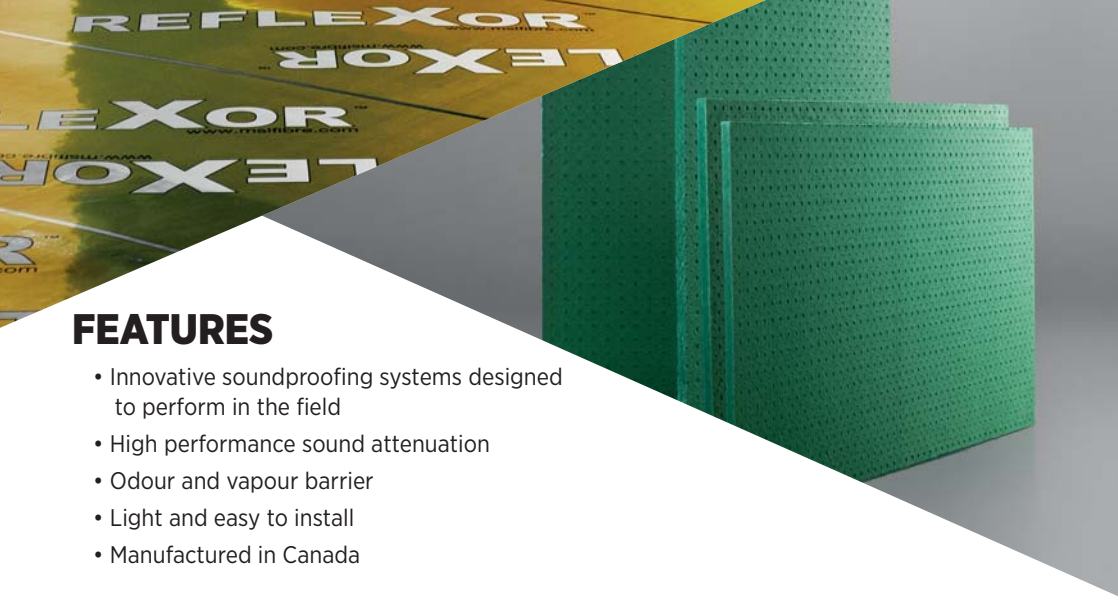
MSL

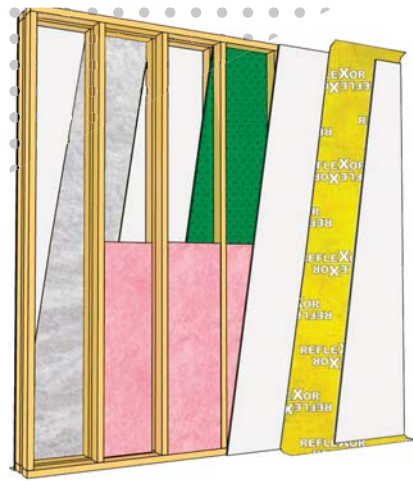
Customer service
1 800 561-4279
www.mslfibre.com

REFLEXOR[®]

SONOPAN II[®]

SOUNDPROOFING SYSTEMS FOR WALLS & CEILINGS

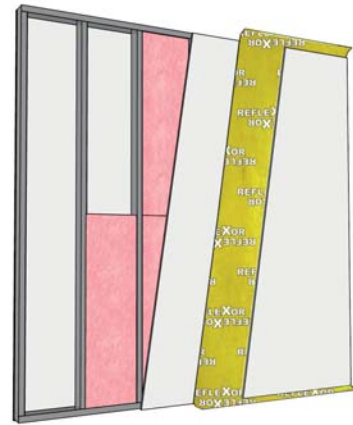




STC 63

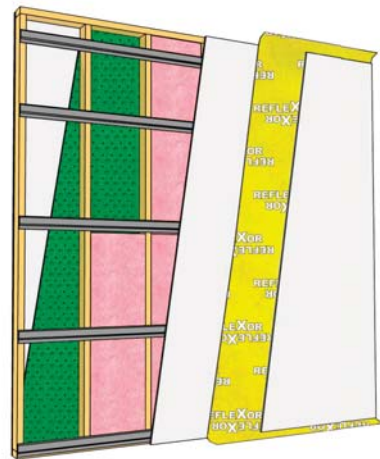
| | |
|-----------------------|------------------------------|
| Drywall | 15.86 mm (5/8") |
| Reflexor | 1.7mm (1/16") |
| Drywall | 15.86 mm (5/8") |
| Fibreglass insulation | 88.9 mm (3 1/2") |
| Wood stud | 38 x 89 mm (1 1/2" x 3 1/2") |
| SONOpan II | 19 mm (3/4") |
| Air space | 25 mm (1") |
| Wood stud | 38 x 89 mm (1 1/2" x 3 1/2") |
| Fibreglass insulation | 88.9 mm (3 1/2") |
| Drywall | 15.86 mm (5/8") |
| Reflexor | 1.7mm (1/16") |
| Drywall | 15.86 mm (5/8") |

1 hour Fire rating • CAN/ULC S101 • ANSI UL 263
 UL Designs: U309, U314, U423, U425, U465
 ULC Designs: W301, W415, W453



STC 52

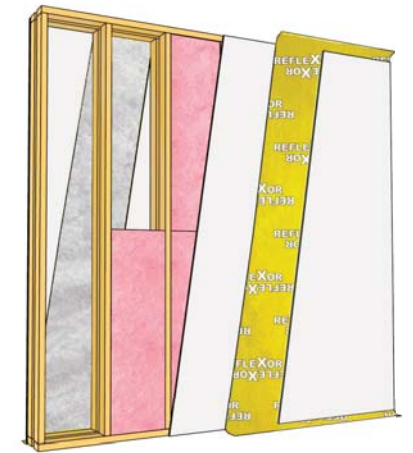
| | |
|-----------------------|------------------|
| Drywall | 15.86 mm (5/8") |
| Fibreglass insulation | 88.9 mm (3 1/2") |
| Metal studs | 92 mm (3 5/8") |
| Drywall | 15.86 mm (5/8") |
| Reflexor | 1.7mm (1/16") |
| Drywall | 15.86 mm (5/8") |



STC 55

| | |
|--------------------------------------|------------------------------|
| Drywall | 15.86 mm (5/8") |
| SONOpan II | 1.7mm (1/16") |
| Fibreglass insulation | 88.9 mm (3 1/2") |
| Wood stud | 38 x 89 mm (1 1/2" x 3 1/2") |
| Resilient channels at 406 mm o.c. | 12.7 mm (1/2") |
| Drywall | 15.86 mm (5/8") |
| Reflexor | 19 mm (3/4") |
| Drywall | 15.86 mm (5/8") |

1 hour Fire rating • CAN/ULC S101 • ANSI UL 263
 UL Designs: U309, U314, U423, U425, U465
 ULC Designs: W301, W415, W453



ASTC 61

| | |
|--------------------------|------------------------------|
| Drywall | 13 mm (1/2") |
| Reflexor | 1.7mm (1/16") |
| Drywall | 15.86 mm (5/8") |
| Fibreglass insulation | 88.9 mm (3 1/2") |
| 2 x 4 metal or wood stud | 38 x 89 mm (1 1/2" x 3 1/2") |
| Air space | 25 mm (1") |
| 2 x 4 metal or wood stud | 38 x 89 mm (1 1/2" x 3 1/2") |
| Fibreglass insulation | 88.9 mm (3 1/2") |
| Drywall | 15.86 mm (5/8") |
| Reflexor | 1.7mm (1/16") |
| Drywall | 13 mm (1/2") |