

Installation guide for walls and ceilings

Step 1 (Ceilings)

- Fasten **SONOpan** to joists (or existing drywall board) using drywall screws with washers, 12" o/c (12" apart at the perimeter and center of the panel).

Step 2 (Walls)

- Fasten **SONOpan** to studs (or existing drywall board) using drywall screws with washers, 12" o/c (12" apart at the perimeter and center of the panel).

Step 3 (Ceilings)

- Fasten the resilient channels perpendicular to the joists every 12" and according to the manufacturer's specifications.
 - Fasten the 1st channel 6" from the wall.
 - Fasten the 2nd channel 12" from the same wall.
 - Fasten the last channel 6" from the opposite wall.

- Fasten the first row of drywall to the resilient channels using drywall screws, according to the manufacturer's specifications.

Step 4 (Walls)

- Fasten the resilient channels to the studs every 24" and according to the manufacturer's specifications.
 - Fasten the 1st channel 2" from the ground
 - Fasten the 2nd channel 24" from the floor
 - Fasten the last channel 6" from the ceiling
- Fasten the first row of drywall to the resilient channels using drywall screws according to the manufacturer's specifications.

Step 5 (Walls and ceilings)

- Install 2nd row of drywall starting from the ceiling and finishing with the walls, according to the manufacturer's specifications.

Note:

- Always ensure that the **SONOpan** is protected from the elements during installation and until completion of the project.
- Apply acoustic sealant to the perimeter of each **SONOpan** panel as well as to the perimeter of walls and ceilings, and to all other seams, joints and openings.
- For optimum performance, make sure any wall or ceiling cavity is filled with cellulose, mineral wool or fiberglass insulation.



Properties	Requirements	Nominal Value
Transverse load at rupture	ASTM C-209	6.80 kg 15 lbs
Tensile Strength parallel to surface	ASTM C-209	17.76 g / m ² 60.7 lbs / in ²
Water absorption	ASTM C-209	4% P / V max.
Linear expansion	ASTM C-209	0.13%
Compressive Strength (10% deformation)	ASTM C-165	5.85 g / m ² 20 lbs / in ²
Thermal value	ASTM C-518	R = 2.45 RSI = 0.43

Physical Properties	Metric	Imperial
Density	224.26 kg / m ²	14 lbs / ft ³
Dimensions	1.22 m x 2.44 m	48 in x 96 in
Area covered per panel	2.97 m ²	32 ft ²
Thickness	19.05 mm	3/4 in
Weight per panel	11.5 kg	26 lbs
Number of panels / skid	65 panels	

Ideal for all projects:

- Movie theaters • Music studios • Adjoining walls
- Condos • Multi-Dwellings • Townhouses • Bathrooms
- Garages • Basements • and more...



MSL
161 St-Paul Street Box 38
Louiseville, Quebec
J5V 2L6
Toll free: 1-800-561-4279



MSLfibres.com

SOUNDPROOFING PANELS FOR WALLS AND CEILINGS

SONOpan®

THE FIRST CHOICE FOR YOUR SOUNDPROOFING PROJECTS FOR A SUPERIOR PERFORMANCE

-  Acoustic barrier
-  Designed to absorb a wide range of frequencies




MSLfibres.com

Environmental properties:

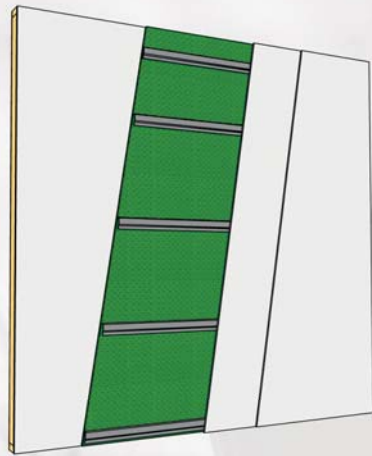
- 0% - VOC (g / l.) - Volatile organic compounds
- 100% recycled and recyclable fibres



MSLfibres.com

Renovation

+/- STC 58*



Existing walls:

Drywall

Wood studs 600 mm x 1200 mm (2" x 4") at 406 mm (16") o.c.

Insulation wool batt (min. R-12)

Drywall

Adding:

SONOpan 19 mm (3/4")

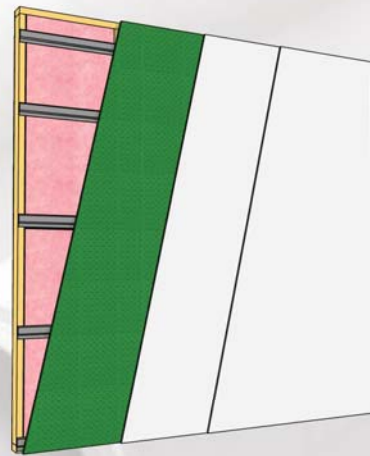
Resilient channels at 610 mm (24") o.c.

Type X Drywall 15.9 mm (5/8")

Type X Drywall 15.9 mm (5/8")

New construction

STC 58*



Type X Drywall 15.9 mm (5/8")

Wood studs 600 mm x 1200 mm (2" x 4") at 610 mm (24") o.c.

Insulation wool batt R-12

Resilient channels at 610 mm (24") o.c.

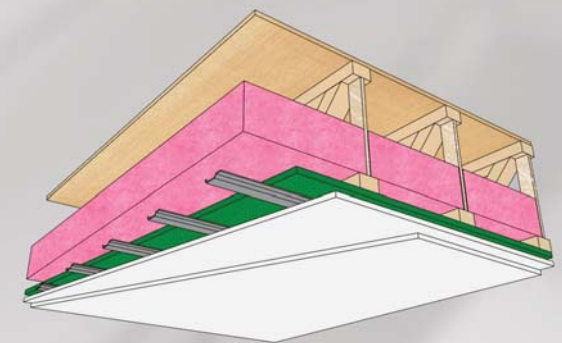
SONOpan 19 mm (3/4")

Type X Drywall 15.9 mm (5/8")

Type X Drywall 15.9 mm (5/8")

New construction

STC 56*



Open joist 300 mm (12")

Insulation wool batt R-20

SONOpan 19 mm (3/4")

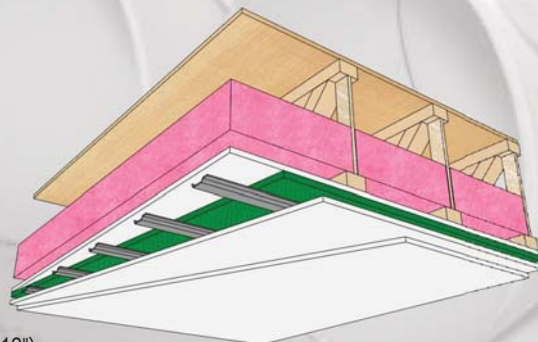
Resilient channels at 300 mm (12") o.c.

Type X Drywall 15.9 mm (5/8")

Type X Drywall 15.9 mm (5/8")

Renovation

+/- STC 58*



Existing ceilings:

Open joist 300 mm (12")

Insulation wool batt (min. R-20)

Drywall

Adding:

SONOpan 19 mm (3/4")

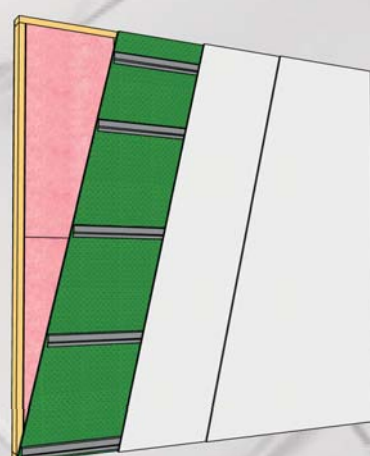
Resilient channels at 300 mm (12") o.c.

Type X Drywall 15.9 mm (5/8")

Type X Drywall 15.9 mm (5/8")

New construction

STC 56*



Type X Drywall 15.9 mm (5/8")

Wood studs 600 mm x 1200 mm (2" x 4") at 610 mm (24") o.c.

Insulation wool batt R-12

SONOpan 19 mm (3/4")

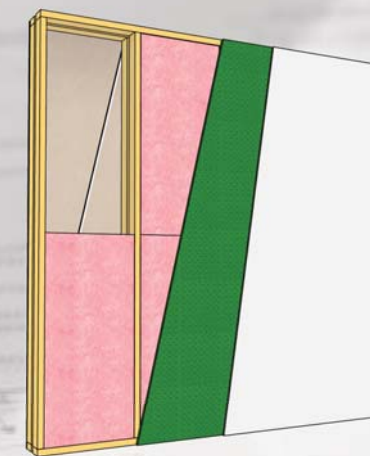
Resilient channels at 610 mm (24") o.c.

Type X Drywall 15.9 mm (5/8")

Type X Drywall 15.9 mm (5/8")

New construction - Partition wall

STC 68*



Type X Drywall 15.9 mm (5/8")

Type X Drywall 15.9 mm (5/8")

Wood studs 600 mm x 1200 mm (2" x 4") at 610 mm (24") o.c.

Insulation wool batt R-12

Air space 25.4 mm (1")

Insulation wool batt R-12

Wood studs 600 mm x 1200 mm (2" x 4") at 610 mm (24") o.c.

SONOpan 19 mm (3/4")

Type X Drywall 15.9 mm (5/8")

* The indicated STC / FSTC performances on drawings can vary according to the physical properties of the materials in the assembly and their installation.



MSLfibre.com



MSL products are made with recycled and recyclable materials.



MSLfibre.com