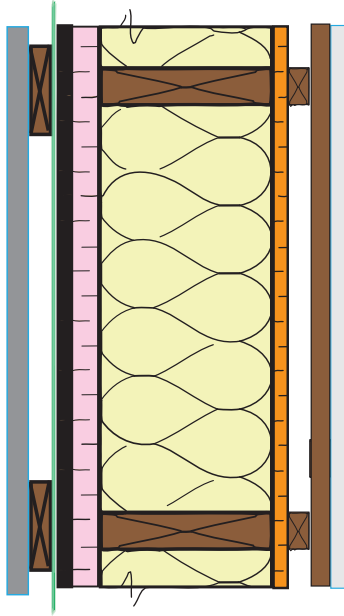
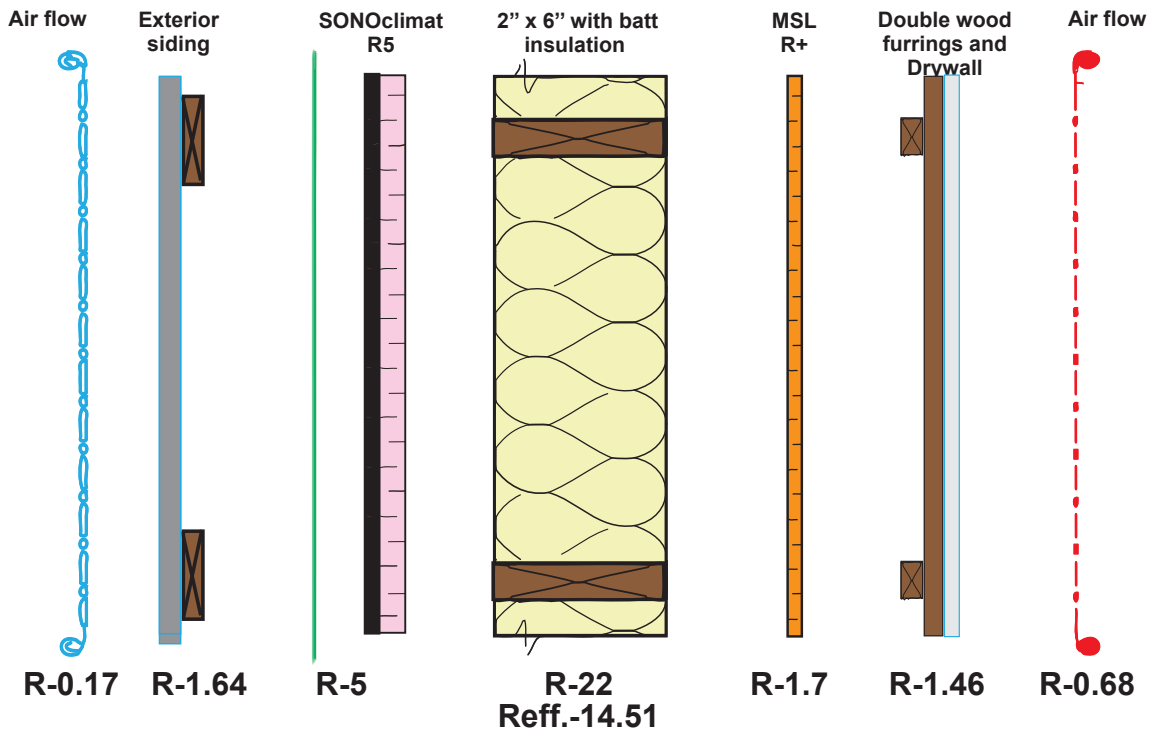


Exterior Wall

Products:	R* Value	RSI* Value
Outside air flow	0.17	0.03
Siding	0.62	0.11
Furrings 19.5 mm (0.75 in) or air space 25 mm (1 in)	1.02	0.18
Weather barrier	0.00	0.00
SONOclimat R5 34.93 mm (1.375 in)	5.00	0.88
Stud 38 x 140 mm (2 x 6 in) at 406 mm (16 in) o.c. with batt insulation 140 mm (5.5 in)	22.00	3.87
MSL R+ (vapor barrier panel)	1.70	0.30
Double wood furrings 39 mm (1.5 po)	1.02	0.18
Drywall 12.7 mm (0.5 po)	0.44	0.08
Inside air flow	0.68	0.12

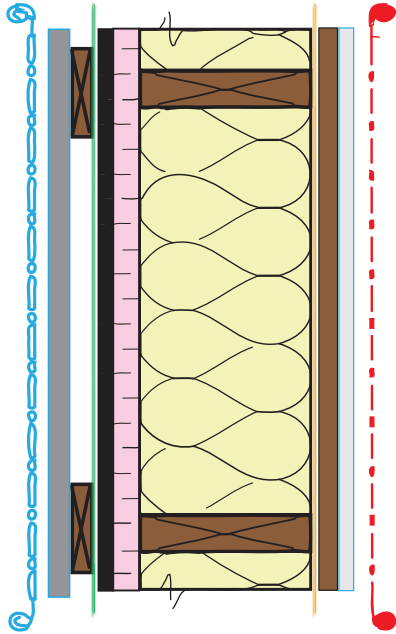


*R value and RSI based on the total thickness of the product.



R total = 32.65 (RSI = 5.75)

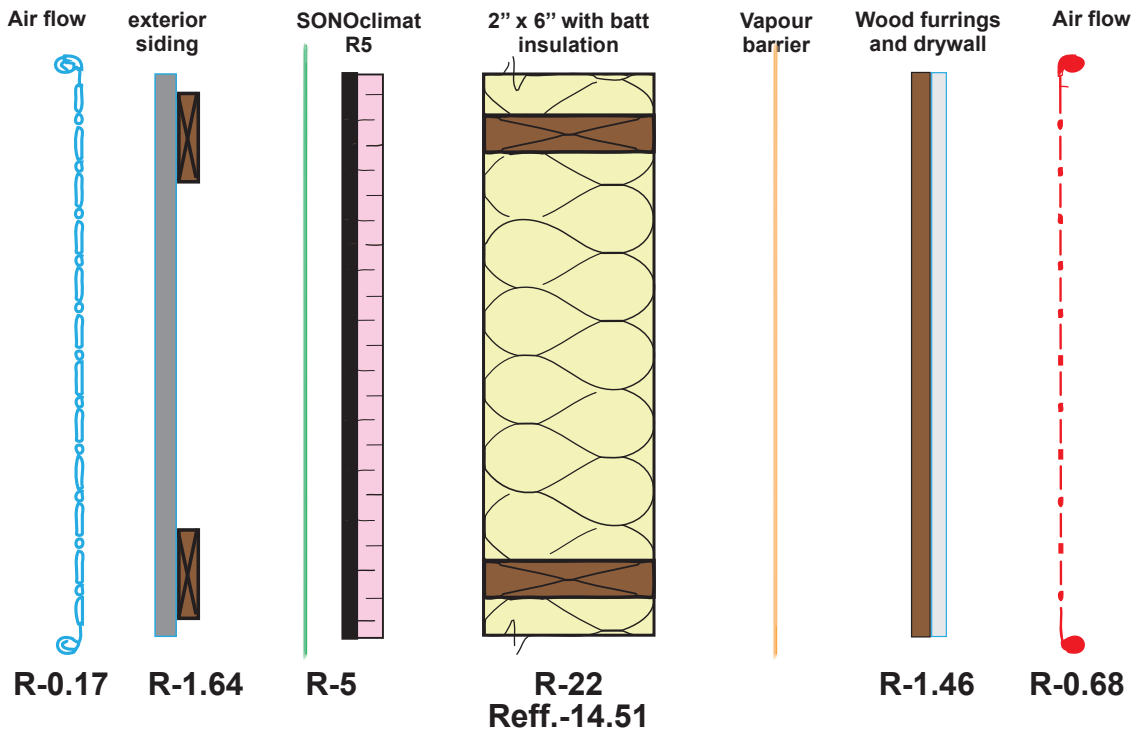
R effectif = 25.16 (RSI = 4.43)



Exterior Wall

Products:	R* Value	RSI* Value
Outside air flow	0.17	0.03
Siding	0.62	0.11
Furrings 19.5 mm (0.75 in) or air space 25 mm (1 in)	1.02	0.18
Weather barrier	0.00	0.00
SONOclimat R5 34.93 mm (1.375 po)	5.00	0.88
Stud 38 x 140 mm (2 x 6 in) at 406 mm (16 in) o.c. with batt insulation 140 mm (5.5 in)	22.00	3.87
Polythene Vapor Barrier	0.00	0.00
Wood furrings 19.5 mm (0.75 po)	1.02	0.18
Drywall 12.7 mm (0.5 po)	0.44	0.08
Inside air flow	0.68	0.12

*R value and RSI based on the total thickness of the product.



R total = 30.95 (RSI = 5.45)

R effectives= 23.46 (RSI = 4.13)