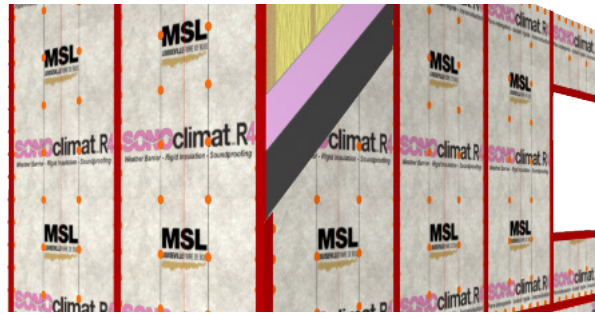


# SONOclimat AIR4

## Installation guide

### Air-Barrier and Insulation Sheeting



#### Transportation of SONOclimat® AIR4.

Make sure tie-downs are placed on protective corners to prevent damage to SONOclimat® AIR4 during transportation.

#### Storage of SONOclimat® AIR4 pallets

Make sure SONOclimat® AIR4 pallets are stored in a dry place, protected from the elements.

Keep SONOclimat® AIR4 panel in their original packaging, on flat, well-drained surface and protect them from adverse weather condition.

#### Installation of panels on studs, wall application

Make sure structural elements conform to current building standards. Have any non-conformity assessed by a construction professional.

Install the SONOclimat® AIR4 panels with the membrane side facing outside. The panel joint should be placed at the center of the studs, spaced at 16 in. o.c. or 24 in. o.c. Make sure vertical and horizontal joints as well as cut-out sections are properly supported.

Install the SONOclimat® AIR4 panels against each other for optimum sealing. Attach the panel SONOclimat® AIR4 using asphalt shingles nails with a length of 2 3/8" and 0.120" diameter or more, respecting the nailing pattern recommended by MSL.

Horizontal and vertical joints between the panels must be sealed with construction tape, posed continuously.

Install furring strips 1 "x 3 " using the nail a length of 3 1/4 " or more. Follow the manufacturer's recommendations coating . To maintain all the benefits of the product, we recommend that you install the coating within a reasonable time .

#### Type fastener can be used with pneumatic equipment:

Nails with washer in length and 2 1/2" diameter of 0.120 " and must be used in accordance with the nailing pattern recommended by MSL .

#### The nailing patern recommended by MSL :

- In perimeter: to 6 inches c / c
- Center: 12 inch c / c max.

\*\* The supports shall not be less than 3/8" the edge of the panel SONOclimat® AIR4.

This quote is valid for Part 9 ( Housing and Small Buildings ) of the 2005 Building Code. SONOclimat® AIR4 respect all the features of the new standard in energy efficiency .

\*\* Refer to section 9.4 . ( Structural Requirements ) of the 2005 Building Code for additional information on structural strength and adding reinforcement.

For additional information, do not hesitate to contact our customer service.



infoplus@mslfibrecom • www.mslfibre.com

For information: contact our customer service 1 800 561.4279