

# SONOclimat A4

## Technical Data sheet

### Sheating



Our asphalt-coated products are composed of interlocking cellulose fibres bonded together by heat, pressure and premium bitumen emulsion.

The density of this material has been specified to provide an optimum combination of board strength and insulation value.

The acoustical insulation panels of **MSL** are composite panels combining the high-performance of fibreboard panels to the EPS.

The **SONOclimat® A4** panels are distinguished by their strength, superior physical properties and represent an excellent choice for insulation and acoustical needs for your exterior walls.

Our continuous quality control in the manufacturing process and the judicious choice of selected raw material provide our customers a superior quality product.

## Advanced R4 Air-Barrier Insulation Panel

Properties	Requirements	Results
Density (voluminal mass) Fibreboard	ASTM D-1037	16 lb / ft <sup>3</sup> 256 kg / m <sup>3</sup>
Expanded Polystyrene	ASTM-3575	1,3 lb / ft <sup>3</sup> 20.82 kg / m <sup>3</sup>
Transverse load at rupture Fibreboard	ASTM C-209	17 lb 7.7 kg
Tensile strength parallel to surface Fibreboard	ASTM C-209	330 lb/in <sup>2</sup> 2275 kPa
Water absorption Fibreboard	ASTM C-209	2,3%
Expanded Polystyrene	D570	0,8%
Linear expansion Fibreboard	ASTM D-1037	0,08%
Compressive strength (10% deformation) Fibreboard	ASTM C-165	Over 35 lb/in <sup>2</sup> (min) (Over 241 kPa (min))
Expanded Polystyrene	ASTM D-1621	18.21 lb/in <sup>2</sup> (125.20 kPa)
Water vapour permeability <b>SONOclimat® A4</b>	ASTM E-96	3.05 perms (193 ng)
Air permeability Fibreboard	ASTM E-2178-03	1.058 L/(s.m <sup>2</sup> ) to 75Pa
Membrane Pare-air	ASTM E-283-91	0.004 L/(s.m <sup>2</sup> ) to 75Pa
Nail pull through resistance Fiberboard	ASTM D-1037	41 lbs 18.6 kg
"R" Factor <b>SONOclimat® A4</b>	ASTM C-518-04	4.00 oF ft <sup>2</sup> hr/BTU



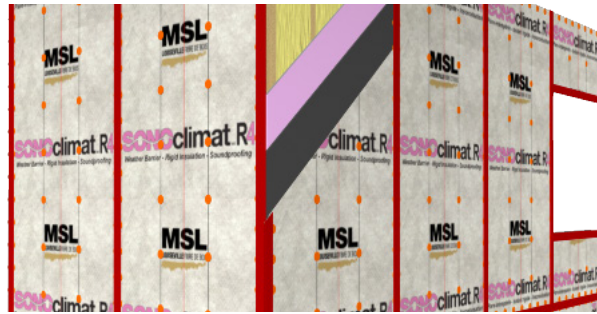
infoplus@mslfibre.com • www.mslfibre.com

For information: contact our customer service 1 800 561.4279

# SONOclimat AIR4

Technical Data sheet (continued)

## Sheating



## Advanced R4 Air-Barrier Insulation Panel

Dimensions	4' X 8' (1.22 m x 2.44 m)
	4' x 9' (1.22 m x 2.75 m)
Thickness	1 1/8" ( 28.57 mm)

The information on this Technical Data sheet is based upon data considered to be true and accurate, based on laboratory tests and production measurements, and is offered solely for the user's consideration, investigation and verification. Nothing contained herein is representative of a warranty or guarantee for which the manufacturer can be held legally responsible. The manufacturer does not assume any responsibility for any misrepresentation or assumptions the reader may formulate.



infoplus@mslfibre.com • www.mslfibre.com

For information: contact our customer service 1 800 561.4279