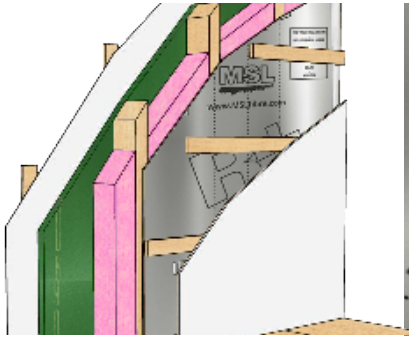




# Technical Data sheet

## Rigid Insulation and Soundproofing wood fiber panel with built-in vapour barrier R+



R+ is a fiberboard panel with an integrated aluminum vapour barrier which provides an excellent barrier against air and moisture, while enhancing the soundproofing of your home. The R+ panel prevents moisture produced by occupants from migrating into the walls of your home, keeping them dry and free from mould. Rigid and non-friable, the R+ panel allows professional installation while offering optimum energy efficiency.

## Rigid Insulation and Soundproofing wood fiber panel with built-in vapour barrier R+

Properties	Requirements	Results
<b>Density</b>	ASTM C-209	14.5 lb / ft <sup>3</sup> 232 kg / m <sup>3</sup>
<b>Transverse load at rupture</b>	ASTM C-209	12.47 lb 5.66 kg
<b>Tensile strength parallel to surface</b>	ASTM C-209	330 lb / in <sup>2</sup> 2275 kPa
<b>Water absorption</b>	ASTM C-209	5 %
<b>Linear expansion</b>	ASTM D-1037	0.08 %
<b>Compressive strength R+</b> (10 % deformation)	ASTM C-165	More than 35 lb/in <sup>2</sup> (min) (More than 241 kPa (min))
<b>Water vapour permeability R+</b> (after aging)	ASTM E-96	0.03 perms (1.7 ng/s•m <sup>2</sup> •Pa)
<b>Air permeability R+</b>	ASTM E-2178	0.0003 L/(s.m <sup>2</sup> ) à 75Pa
<b>Reflectivity R+</b>	ASTM C-1371	0.05 (95 %)
<b>Thermal resistance</b> 25 mm (1")	ASTM C-518	3.4 °F ft <sup>2</sup> hr / BTU
<b>* « R » Value R+</b> (including air space)	ASTM C-518	4.3 °F ft <sup>2</sup> hr / BTU

\* Pending confirmation of results by an external laboratory.

**Dimensions** 4' X 8' 1" (1.22 m x 2.46 m)

**Thickness** ½" ( 12.7 mm)

The information on this Technical Data sheet is based upon data considered to be true and accurate, based on laboratory tests and production measurements, and is offered solely for the user's consideration, investigation and verification. Nothing contained herein is representative of a warranty or guarantee for which the manufacturer can be held legally responsible. The manufacturer does not assume any responsibility for any misrepresentation or assumptions the reader may formulate.



infoplus@mslfibre.com • www.mslfibre.com

For information: contact our customer service 1 800 561.4279