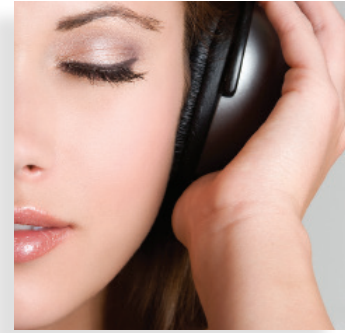


### Soundproofing



Our Wood Fibre Insulation Panels are composed of interlocking cellulose fibres bonded together by heat, pressure and premium wax emulsion.

This product conforms to all requirements of CAN / ULC-S706-09 and ASTM C208.

The density of this material has been specified to provide an optimum combination of board strength and insulating value.

Our products are produced and designed with consideration for environmental responsibility and sustainability, manufactured in facilities that comply with the most stringent government environmental regulations, and can therefore be a part of any “green” construction project.

## Soundproofing panel for floor systeme

Properties	Standard Limits	Nominal Value
Density	ASTM D-1037	≥16 lbs / ft <sup>3</sup> ≥256 kg / m <sup>3</sup>
Transverse load at rupture	ASTM C-209	≥ 35N ≥ 7.868 lbF
Tensile strength perpendicular to surface	ASTM C-165	≥ 24 KPa ≥ 3.5 psi
Tensile strength parallel to surface	ASTM C-209	≥ 350 KPa ≥ 51 psi
Water absorption	ASTM C-209	≤ 5%
Linear expansion	ASTM D-1037	≤ 0.5%
Compressive strength (10% deformation)	ASTM C-209	≥ 331 KPa ≥ 48 psi
“R” factor / inch (1”)	ASTM C-518	3
Dimension	4' X 4' (1.22 m x 1.22 m)	
Thickness	7/16" (11 mm)	

The information on this Technical Data sheet is based upon data considered to be true and accurate, based on laboratory tests and production measurements, and is offered solely for the user's consideration, investigation and verification. Nothing contained herein is representative of a warranty or guarantee for which the manufacturer can be held legally responsible. The manufacturer does not assume any responsibility for any misrepresentation or assumptions the reader may formulate.